

New solution for data distribution networks in apartments

The STAKOHOME solution (from 2006) offers a cheap and simple solution for data distribution systems which are becoming commonplace in modern homes. The STAKOHOME solution replaces obsolete telephone network installations and offers an opportunity to use the distribution system for transmission of voice, data or IP-TV.

Having a sufficient amount of data sockets available pays off. Most devices such as TVs, receivers, set-top boxes or DVDs are

already fitted with data connectors of the RJ45 type. Therefore, they can be interconnected into a single network and their control then becomes very easy.

Standard data distribution cabinets are not suitable for installation into apartment houses (or individual apartments) and it is almost impossible to install the so called patch panels (which are necessary for data distribution) available on our market into the standard power distribution cabinets with DIN rails. **STAKOHOME provides a solution without any compromises.**



"COMPETING SOLUTION" – data distribution system installed without the STAKOHOME solution



STAKOHOME-byT02 apartment data distribution cabinet

A declaration of conformity has been issued for the complete STAKOHOME solution (the complete apartment data distribution cabinet). The declaration includes type-approval tests (necessary for power inspections or approval of a building for use). This is also confirmed by the STAKOHOME type-approval label attached to the distribution panel.

THE STAKOHOME SOLUTION INCLUDES

- Distribution cabinet such as OEZ, Siemens, Eaton, Hager, Legrand, Schneider, ABB (ideally 3 lines / 36 modules or 4 line / 48 modules) – a different type can be delivered upon customer's request (so that it matches the design of the **power distribution cabinet**)
- Patchpanel(s) STAKOHOME-PATCH02-06 for a DIN rail
- Cover strips and blanking plugs
- Dustproof brush
- Power socket 230 V (to be attached to the bottom of the distribution cabinet) which provides power supply for active elements (router, network switch etc.)
- Multi-purpose brackets (2 pieces) for a DIN rail (to attach the active element)
- Type-approval label of the distribution cabinet (issued by our company)

ADVANTAGES OF THE STAKOHOME SOLUTION

- **Installation space and financial economy** (less cabling).
- Individual solution **tailor-made to customer's needs.**
- **Almost any type of distribution cabinet can be used.** Uniform design of the power and data distribution cabinets in the same apartment.
- The user has a full **control of data network in his apartment.**
- Freedom to choose the data distribution system manufacturer. **Compatible** with various keystone type connectors such as data connectors (cat. 5, 6, 6A etc.), optical connectors (SC, LC, ST) etc.
- **Easy installation and handling.**

The STAKOHOME solution is used and supported by one of the leading telecommunication companies – T-Mobile Czech Republic a.s. (which is a brand of the German group Deutsche Telekom AG). The solution is also frequently included in the portfolios of leading developer companies in the Czech Republic.



For further information (including a video) visit the site www.bytovy-rozvadec.cz/en

PATCH PANEL STAKOHOME-PATCH02-06

The most recent generation of a multi-purpose and modular data patch panel.

PACKAGE CONTAINS:

- 1 modular multi-purpose plastic patch panel for a DIN rail or flat surface, not fitted, for 6 keystone type ports
- 1 marker
- 1 set of pre-printed and blank marking labels
- 4 screws for attachment to a flat surface

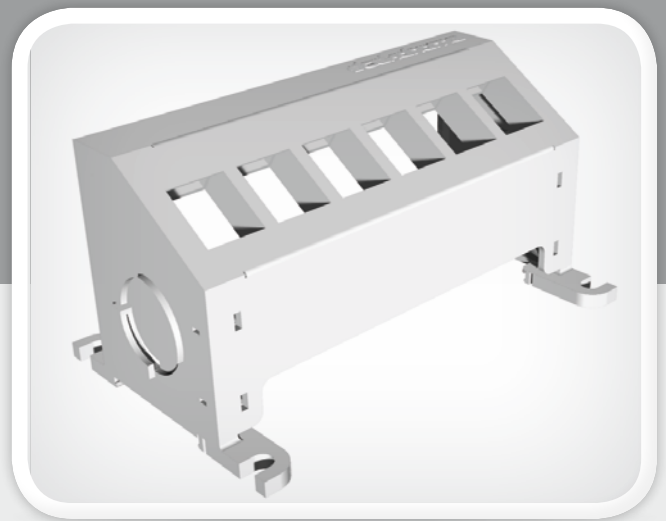
Note: This patch panel is legally protected by the Industrial Property Office.

Advantages

- It can be attached either to a DIN rail (TS-35) Distribution cabinet such as Siemens, Eaton, OEZ, ABB, Hager, Schneider Electric, Legrand or a flat surface.
- Once the STAKOHOME-PATCH02-06 panel has been attached, its upper section can be tipped back for easy access to the cabling and connectors (Fig. 1a and 1b).
- Six more positions can be added to the patch panel (i.e. individual patch panels can be extended by connecting other patch panels to them). Easy connection by means of a side „bayonet“ mount system (fig. 2).
- The distance strip can be turned over (then the connectors in the base part can be turned by 180°).



- Unused positions of the patch panel can be blanked off.
- The patch panel can be marked in two ways: directly on the panel (by means of a marker delivered with the panel) or onto a blank or pre-filled label (also delivered with the panel).
- Patch panel STAKOHOME-PATCH02-06 can be fitted with connectors RJ45 keystone (cat. 5, 6, and 6A), optical connectors (SC, LC, ST), audio connectors, connectors for distribution of STA and also with all modules, connectors and reductions which use the keystone type attachment device.



1A



1B



2



Wide range of uses in housing development. Due to its compatibility with different types of connectors, this patch panel is suitable for use in various projects (such as sound system distribution, TV-SAT distribution, CCTV, security systems, instrumentation and control systems etc.).

It is also suitable (due to its small dimensions and possibility to be fixed onto a flat surface) **for residential houses** where it is installed into a common distribution panel/cabinet together with other technologies (such as TV-SAT).



For further information (including a video) visit the site www.bytovy-rozvadec.cz/en